

2994 . 11 MOU

❖ MOUNT LAWLEY MATTERS ❖

Volume 23 Issue 2

August 2000

Mount Lawley Society President's Report

I am very pleased to inform members that changes were recently made to the District Planning Scheme No 2 (and published in the Government Gazette on May 26th 2000) creating the suburbs of Mount Lawley, Inglewood and Menora as **Heritage Protection Areas**.

New Heritage Protection Area Guide-lines for the above suburbs are now in place. A new copy of the design guide-lines can be obtained from the City of Stirling or at their website www.stirling.wa.gov.au We now have a satisfactory zoning regime with housing density reduced to R12.5 on streets on both sides of Beaufort Street between Walcott Street and First Avenue. The Society will be focussing its efforts in the future on reducing the zoning in the remaining parts of Mount Lawley. It is hoped that one day all of Mount Lawley will be zoned R12.5.

With regret I have decided to stand down as President of the Mount Lawley Society due to personal reasons. I would like to sincerely thank committee members for all their hard work and support during my time as President. Certainly, the Mount Lawley Society is in good shape. It has a strong membership base and it continues to play a key role as the suburb's principal lobby group voicing the community's views on heritage and other issues affecting our suburb.

I wish the new President all the very best for the future and we will report further on my successor in the next newsletter.

Tony Separovic



Welcome to new Mount Lawley Society Members

Jessica Atkins	Leah Perry
Con Berbatis	Douglas Trewenack
Rita Berbatis	Helen Trewenack
Darren Osland	Deborah Wreford
Lesley Perry	John Wreford



MLS Secretary: Tricia Herkess 9471.1241
PO BOX 15
Mt Lawley, 6050

Coming Social Event WINE TASTING AND MEAL

AT
La Vigna Wine Cellars
Saturday 14th October

Enter it in your diaries
now!!
Further details to follow

Our Third Municipality

On Wednesday 9 August, Barrie Baker and Joan Crabtree went to the municipal chambers of the City of Bayswater to meet the local councillors covering that part of Mount Lawley which now lies in that City (Ellesmere Road, Thirlmere Road, Mitchell Street, Stanley Street, Guildford Road, Watley Crescent).

There they met with councillors Sylvan Albert and Terry Gaunt, plus senior planner Fran Lesante.

Barrie and Joan brought up issues that the Mount Lawley Society believed were of concern to that precinct: zoning, design control, traffic, demolitions, mobile power transmitters. They were pleased to receive a good response and have decided to canvas local residents to see which of these issues they would like the City to →

Menora, Coolbinia & Mt Lawley Ratepayers' Association President's Report

As many of you are aware, we have been fairly quiet at MCMR of late, and I guess that after many years of fighting to retain restrictive covenants and the character of our area we don't mind a short break.

It appears we may be busy again soon due to the increase in numbers and expansion of Edith Cowan University.

We will be attending a meeting on August 11th and will keep you up-to-date as news comes to hand, or you can attend our next meeting on August 30th.

Meanwhile, we have changed our meeting dates too Bi-monthly. Meetings will be on the last Wednesday of the following months -

August (30th), October (25th),
November (29th), February (28th),
April (25th), June (27th - AGM),
our meetings are held at the
Alexander Park Tennis Club at
7:45pm.

November is always our Christmas wind-up so please come and join us for a drink and chat,

If we find that we need to revert to monthly meetings we will do so. Should anyone need to contact us in the meantime please call A/H 9272.1044 or BUS 9242.7557

Mandy Kyros



pursue.

It was decided that Barrie and Joan would draw up a survey form for the area to obtain a direct response to guide further action by Bayswater.

Mount Lawley Society Patron's Report

I firstly would like to warmly thank Tony Separovic for the two and a half years service that he has put in as President of the Mount Lawley Society. His clear legal mind and direct approach have served the community of Mount Lawley well. His leadership and energy have helped continue the proud tradition of never giving up on the essential issues. Tony will still continue on the Committee and help the Society achieve its objectives.

Another issue that has come up in a major way is proliferation of mobile transmitters. Although the jury is still out on the issue of health hazard, the majority of people do not like them. In a heritage protection area like Mount Lawley there are very strong aesthetic reasons to oppose their installation. There is no real reason why these poles cannot be made more attractive, and why each new provider cannot share facilities. One might question why the engineering skill that put humans on the moon cannot design transmitters that are far less obtrusive. We realise that there is little that can be done at the local level, but we will make this a real State/Federal issue. However, the Mount Lawley Society puts it on notice that **legislation that puts far more control over mobile towers and transmitters will be a major issue in our area in the coming state and federal elections.**

That part of Mount Lawley in the Town of Vincent will be under the spotlight again as a tender for the review of the Municipal Heritage Inventory is currently being let. I am sure that the number of places being protected by this means will be increased. The Town of Vincent Council and its Heritage Advisory Committee are minded to give heritage an enhanced profile in its local government jurisdiction.

Barrie Baker

Heritage Properties - Development and Demolition Applications

The City of Stirling has recently issued a procedural guide applying to all applications to demolish, develop or make significant alterations to properties which are:

- ◆ Listed on the City's Municipal Inventory of Heritage Places
- ◆ Within a Heritage Protection Area

The guide states that **Planning Application and Building Licence Procedures** will be considered within the context of the streetscape including

- ◆ Landscaping, including the retention of street trees and verges →

- ◆ The design, materials and height of any front fence being proposed
- ◆ The street setbacks in relation to the existing streetscape and adjoining buildings
- ◆ The distribution of building bulk on the site, including location and impact of second story additions
- ◆ The selection of exterior finishes and materials as they relate to the existing structures on site and/or in the immediate street context
- ◆ The overall appearance of the design details of the proposal relative to draft guidelines proposed for the area.

All applications will be considered by the Development Review Group in regard to design and streetscape details and in accordance with adopted guidelines for these areas.

Applications for demolition for places on the Inventory or in a Heritage Protection Area will only be considered following the assessment of the heritage significance of the place and an evaluation of alternatives to demolition.

Council must receive an acceptable development proposal for the site before issuing approval for demolition.

Note that demolition licences for properties which were identified on the **Draft Municipal Inventory of Historical Places** may be deferred to enable the City to prepare a historical record of the building, prior to demolition.

The Mount Lawley Society sees this documented process as a significant step in the right direction. Thanks to all concerned.

It looks forward to the day when:

- ◆ entry on the Municipal Inventory automatically prohibits demolition
- ◆ steps are taken to penalise those developers who demolish by neglect

It recognises with sadness that the finite source of authentic homes in Mount Lawley decreases by something like a dozen a year, and that these losses are irreplaceable

New Headquarters for the Mount Lawley Society

For the past sixteen years, the headquarters of the Mount Lawley Society has been in the old dining room of the City of Stirling owned house at 11 Alvan Street. This has served us well.

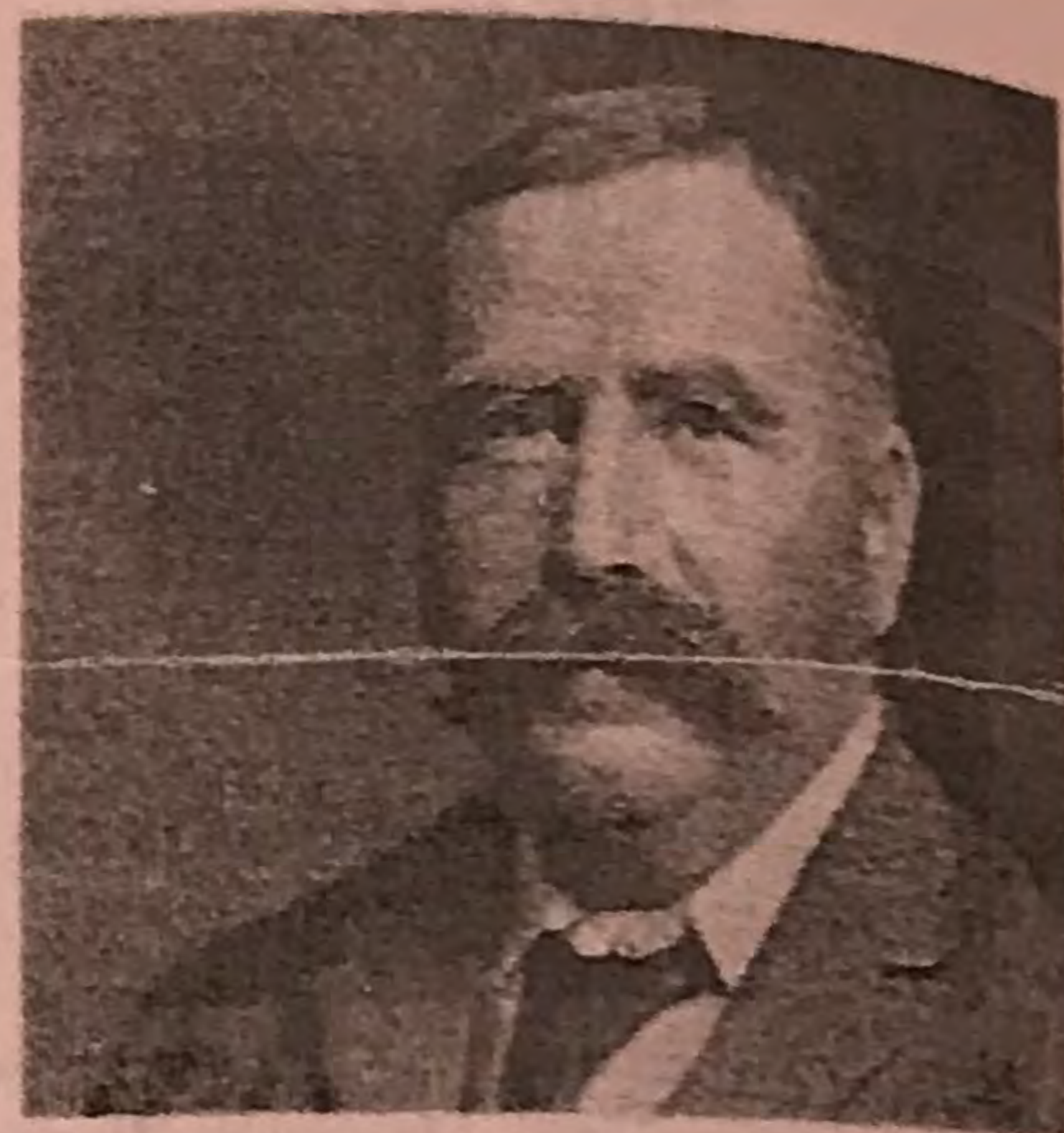
That property has also been used by other groups such as the Tree Society, and a child care group.

However, now that the magnificent new Mount Lawley Bowling Club facilities are open, we will be moving over into that building.

In the process, we hope to have in place the opportunity for Mount Lawley Society →

members to use the Bowling Club facilities (bar, lounges and kitchen) as affiliate members of the Bowling Club. The Society will pay the membership fees on your behalf. This access to this splendid facility represents a significant step forward for the Society and its membership.

Many thanks to the Mount Lawley Bowling Club for its cooperation in putting this arrangement together with us.



MR SAMUEL COPLEY

Mr Samuel Copley arrived in Western Australia from Huddersfield in England during the 1890's and worked as a hairdresser in a Hay Street shop opposite the old Parliament House next to the Perth Town Hall. There he picked up tips on investing from his well-connected customers and went into money lending.

In 1901 he acquired, together with John Robinson MP and Richard Haynes KC Swan Location Z, currently owned by an elderly unmarried daughter of a clergyman in Darlinghurst, Sydney. He negotiated a bargain-basement price for this land described to her as a 'malaria infested swamp'.

The syndicate developed the land, from River to dog swamp, in four estates into the suburb we know today. Samuel Copley became a millionaire.

He bought a cattle station in the Kimberleys, developed the first motorised ferry from Barrack Street and the first motor bus in Victoria Park.

He also owned 16,000 hectares of land in the Avon Valley near Chidlow.

He lived in a lovely house at 707 Beaufort Street from 1903 to 1911. The banks crashed in the depression of 1911 and Copley had to sell out. He returned to Huddersfield where he died some twenty years later.

The Society continues to research our past and looks for help from its members. If you know of any leads, please follow up, and when you have gathered your material, ring Barrie Baker on 9271.5184. This will enable us to enhance our archives and strengthen our arm with facts when we have to address an issue over development of a sensitive place in our historic suburb.

Menora

Volume 23, Issue 3



Secretary:
Michael Faraco
9271.3281

Special points of interest:

- Christmas Party
- Mobile Telecommunications towers
- Heritage status for Lawley residents City of Bayswater
- Mount Lawley So membership links the Mount Lawley club

Inside this issue

Menora, Coolbinia and Mount Lawley Ratepayers' Association Report

New Planning Appeals and Heritage Bills

Bayswater Heritage Report

Underground Power

Society Archives

New Residential Design Codes

Bowling Club

Christmas Party