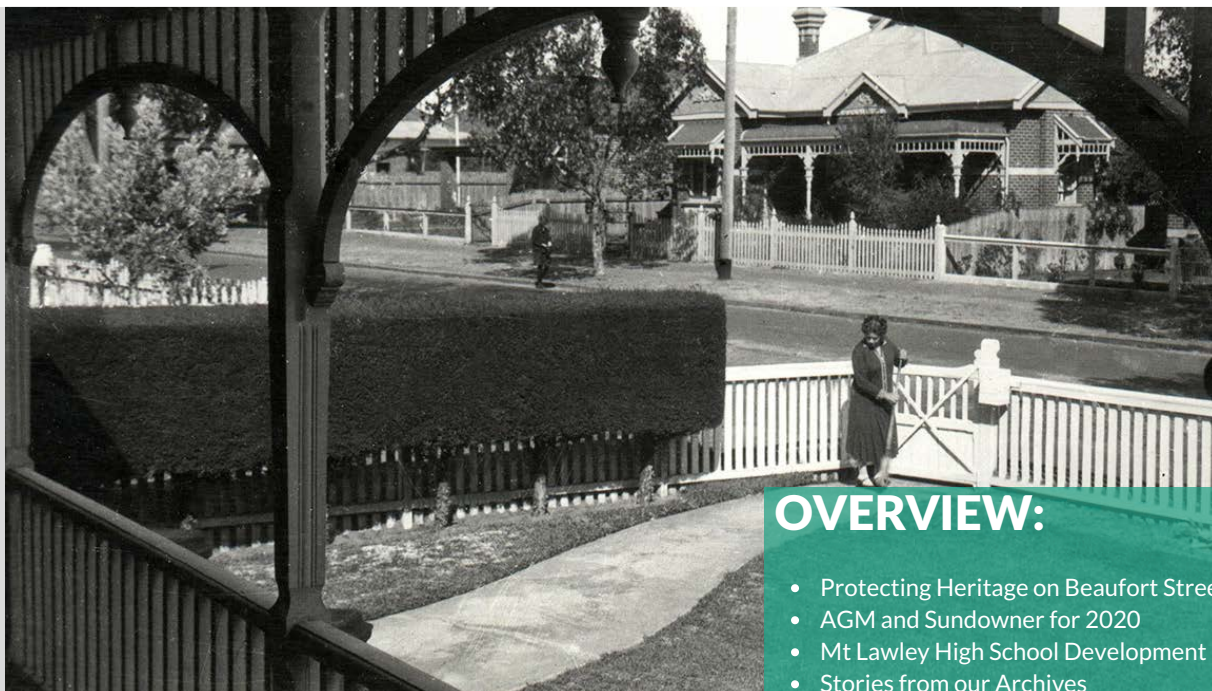


NOVEMBER 2020

FROM THE VERANDAH

Vol 43-2-2020 NOVEMBER

Newsletter for the members of the Mount Lawley Society (MLS) Est. 1977



*From the verandah at 44 Queens Crescent, c1918
See page 8 for more about this photo*

I am pleased to bring you our second newsletter for the year. As 2020 has whirled on by and WA has been able to enjoy the benefits of closed borders and safe socialising, the Mount Lawley Society has unfortunately been unable to host events this year including our annual quiz night.

To finish off an otherwise quiet year, our Sundowner and AGM this year will be at the Mt Lawley Golf Club on Wednesday 2 December commencing at 6pm. This year we have two guest speakers: Simon Millman MLA talking about the exciting future for Mount Lawley Senior High School and Gerard Foley, Senior Archivist WA State Records telling us about the new RetroMaps and how we can explore the changed landscape of Perth through historical survey maps. We look forward to seeing you there.

From my verandah on Park Road to yours. Enjoy.
Tracey King, President.

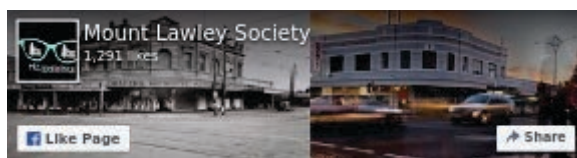


OVERVIEW:

- Protecting Heritage on Beaufort Street
- AGM and Sundowner for 2020
- Mt Lawley High School Development
- Stories from our Archives

We hope you enjoy the varied articles we bring you this month.

Whatever you have going on your verandah, feel free to share. We would love to see your pics of great gardens, architecture, leadlights and anything else you believe represents the character of our local area. Remember to include @mount_lawley_society to share.



Mount Lawley Society
(@mount_lawley_society) • ...
167 Followers, 45 Following, 59...
instagram.com



W: www.mountlawleysociety.org.au
E: mountlawleysociety@gmail.com
F: www.facebook.com/mountlawleysociety
I: https://www.instagram.com/mount_lawley_society/

VALE PETA TOWNSING

OUR SOCIETY'S EARLY DRIVING FORCE
(20 DECEMBER 1943 – 5 OCTOBER 2020)

Peta Christine Townsing was the daughter of Sir Kenneth Joseph Townsing KB, ISO (1914 – 1997) and Lady Frances Olive Townsing (2017 – 2009).

Her father was born in Kalgoorlie and joined the State Public Service in 1931, reaching the rank of Under Treasurer (1966 – 1975). He served in the Australian Army during WWII reaching the rank of major. The family lived at 22 Robin Street Mount Lawley.

She was educated at Perth College and UWA. On her marriage to Don Urquhart, they lived at 26 Park Road Mount Lawley. She worked as a computer services officer.

Following the demolition of historical houses at 703, 705, and 707 Beaufort Street Mount Lawley, Peta and Don, together with other concerned Mount Lawley residents formed the Mount Lawley Society Inc in October 1977.

The Society's principle focus was to preserve the historical built treasure of the suburb, but to also tackle associated issues in land use, building controls, general ignorance and planning vacuums.

Her energy and commitment to all that our community represents has continued to drive the MLS throughout its 43-year history.

Peta was elected Secretary and Don elected President. She was the early driving force, setting up subcommittees for tackling land use, and transport issues, as well as for historical research and social activities to build up community spirit. Membership rapidly increased to over 250 members.

Following the death of Don in March 1980, Peta relinquished her official duties with the Society and moved to live in the south west of WA.

She was appointed the Society's first Life Member in 1981.

Peta was highly respected and full of energy and commitment. She will be greatly missed. Our sincere condolences go to her husband, John, and her family.



Peta at the Society's 40th Anniversary Celebrations in 2017

MLS SUNDOWNER & AGM 2 DECEMBER 2020

MOUNT LAWLEY GOLF CLUB,
1 WALTER ROAD WEST, INGLEWOOD

SUNDOWNER 6.30 - 7.30PM

\$10 PER HEAD

PAYABLE ON THE NIGHT AND INCLUDES FINGER FOODS
BAR WILL BE OPEN TO PURCHASE BEVERAGES OF CHOICE

GUEST SPEAKERS

**SIMON MILLMAN MLA,
MEMBER FOR MT LAWLEY**

... TALKING ABOUT WHAT IS HAPPENING WITH
MT LAWLEY SENIOR HIGH SCHOOL

AND

**GERARD FOLEY,
SENIOR ARCHIVIST, WA STATE RECORDS**

... TELLING US ALL ABOUT THE NEW 'RETROMAPS'
AND EXPLORING THE CHANGED LANDSCAPE OF PERTH
THROUGH HISTORICAL SURVEY PLANS

ANNUAL GENERAL MEETING

FOLLOWS THE SUNDOWNER AT 7.30PM

RSVP ESSENTIAL - MOUNTLAWLEYSOCIETY@GMAIL.COM

GUEST NUMBERS LIMITED DUE TO COVID-19 SOCIAL DISTANCING

PROTECTING 692 BEAUFORT STREET

ARCHITECTURE IS A VISUAL ART, AND THE BUILDINGS SPEAK FOR THEMSELVES.
JULIA MORGAN

The Mount Lawley Society recently supported our community and members through a petition process to highlight the importance of retaining original buildings and character.

Council rejected the request to demolish 692 Beaufort Street.



Historical Archive 692 Beaufort Street

The house at 692 Beaufort Street, now a business and much altered from its original structure, was built in 1915 for Alexander Cohen (1862–1919).

Alexander Cohen was born in Whitechapel, London, where he trained as an optician. He migrated to Victoria via South Africa and Mauritius, which was a successful tour testing the eyesight of many customers and supplying them, and other residents of the British and French colonies. In Victoria, he and his brother Maurice entered into a partnership as builders and built the Malvern Town Hall.

They continued their partnership in Perth, building the Royal Arcade at the corner of Hay and Barrack Streets, as well as the Brisbane Street Synagogue in 1898. Prior to moving to 692 Beaufort Street he lived at 145 Hamersley Road, Subiaco.



Alexander Cohen, first owner of 692 Beaufort Street
Story compiled by the Archiving team

COHEN FAMILY TREE

Elias Gabriel Cohen
(died prior to 1852)
married

Aaltje (Adelaide) Alexander Jacob Levie

Gabriel Elias Cohen
(1824-1897)
married

Rosette Simon Gompertz



Alexander Cohen
(1862-1919)



Dora Kott
(1870-1931)

Gabriel Cohen
(1898-1952)



Leon Cohen
(1902-1956)

married
Doris Muriel Weiss
(1903-1997)

Ruby Violet Cohen
(1906-1969)
married
Gordon Bloomfield



Prof Alexander Cohen
(1926-)
married
Adele Shillman
(1931-1998)

Material provided by Alexander Cohen

THE COHEN FAMILY HISTORY

He married widow Dora Kott in 1898. She was probably born in Victoria, the daughter of Victor and Lena Mandelstam. Her first husband was Abraham Kott (born 1866 in Poland and died 1898) and they married in 1887 in Fremantle. She and Abraham had five children: Arthur Maurice (1888-1888) stillborn son, Max (1891-1976) and Rose (1893-1959) who married Alkin Wallace. Polina (1896-1948) who married ?? Maywood. The children of Alexander and Dora were: Gabriel (1898-1952), Leon(1902-1956), Ruby and Violet (1906-1969) who married Gordon Bloomfield.

Leon Cohen was born and educated in Perth, and started training as a lawyer, but this was interrupted by the death of his father. He initially worked with his mother making women's clothes, and then started a venture (N R Coyle Co Ltd) with his brother in law Albert Weiss, which was unsuccessful. He then branched out on his own in dressmaking, sending his products to country WA and the eastern states. This developed into Mercia Modes in Queen Street, Perth, which employed 25 women in its workroom. He built the house at 118 First Avenue in 1926 and lived there until he died.

Alexander Keith Cohen was born at 118 First Avenue and grew up there. He attended Mount Lawley Primary School and Wesley College. He graduated in Medicine from Adelaide University. Prior to retirement he was a consulting physician, specialising in endocrinology and the treatment of diabetes. He was a President of the Royal Australian College of Physicians and Chancellor of the University of Western Australia from 1999-2002.



Dr Alexander Cohen grew up at 118 First Avenue, Mount Lawley. Before retiring he was a consulting physician, specialising in endocrinology and the treatment of diabetes.

A new future for Mount Lawley High School

BY SIMON MILLMAN, MLA

When I was elected to represent the people of our community in 2017, I felt a great sense of responsibility and also gratitude. I had been elected to represent a neighbourhood with some outstanding cultural and academic institutions, and some terrific artistic and creative organisations. Not least amongst those were the ECU Mount Lawley campus, with its world famous Western Australian Academy of Performing Arts, and the Mount Lawley Senior High School with its renowned Specialist Visual Arts and Performing Arts program.

Those who have seen my contributions, in the media, on social media and in Parliament would be well aware of my respect and admiration for these two institutions, their staff and teachers, their current students and their outstanding graduates.

Recognising our artistic and creative heritage

Ever since it first became clear in early 2019 that Edith Cowan University was considering vacating its Mount Lawley campus, I have been working to secure the best possible outcome for our community, in a way that recognises our wonderful artistic and creative heritage, and balances that heritage with the needs of current and future students.

I am delighted to have secured the transfer to Mount Lawley Senior High School the facilities currently used by the WA Performing Arts Academy when ECU moves into the CBD as part of the City Deal.

An outstanding tradition of nurturing and educating our most creative students will continue, as the high school becomes the home of an unparalleled specialist visual arts, performing arts and creative arts curriculum.

This focus on improving the opportunities for MLSHS students – students from our local neighbourhood – comes on top of the delivery of the promise I made to the electorate in 2017 to see new Science, Technology, Engineering and Mathematics facilities build at MLSHS.

The future for MLSHS and for the ECU campus is exciting, but there is no need to rush any decisions. I am in discussions with the Minister for Planning, Hon Rita Saffioti, to set out the terms of reference for the working group and its membership. I am grateful that the Minister has asked me to Chair the Working Group. We will have experts from the Department of Planning, Lands and Heritage and the City of Stirling on that group, and there will be a call for Expressions of Interest for the working group from local business, community groups and residents.

The working group will provide opportunities for consultation with the broader community, as well as for submissions. I am grateful for your support over the past eighteen months. It is thanks to that support that I have been able to secure this incredible opportunity for us. Together, over the coming months, let's make the most of it.



"It is a privilege to represent this electorate and I am pleased to have used my advocacy to ensure we have a once-in-a-lifetime opportunity to plan for the future of this strategically located site."

A GREAT MASTER PLAN

We will develop the master plan for the site in a considered, deliberate fashion and I will continue to be a strong advocate for the community I love.

The 'Bottle-O'

by Roger Elmitt

The Mount Lawley Society recently received around 50 'old' bottles from Ainsley Bakitch, Librarian at Mount Lawley Senior High School. Most date from the first two decades of the last century – the oldest being from about the 1860s.

We were lucky enough to have engaged Dave Minson from The Colonial Bottle & Collectors Club of WA Inc. He generously gave his time, visiting our archiving session at Yokine in September 2020. Dave identified Chinese ginger jars, various medicine bottles – one a Bonnington's Irish Moss from New Zealand – together with various sauce, wine, spirits and beer bottles.



In the collection are also a number of rough-cut glass ink wells – no doubt from the early days of the school. Dave clarified that the sometimes irregular lips and vertical ridges were to do with the hand making of the products dating back to the early 1900s. We are most grateful to Dave for giving his time and patience for answering our every question to we four bottle ignoramuses! With the information supplied, the collection has been catalogued and will remain within the Society's archives.

Our Cover Photo

Our cover photo is a lovely snapshot of life in the 1920s in Mt Lawley, with Ada Birch sweeping her path.

The house at 44 Queens Crescent Mt Lawley was built by Thomas Plunkett (who established Plunkett Homes) between 1910 and 1915.



Ada Birch, was the first owner and the photo, taken from her verandah, shows the simple, (if not bare garden), a very neat hedge and lawn. Perhaps Ada wasn't a gardener!

Interestingly, it also shows the houses opposite.

Council News



UPDATE FROM INGLEWOOD WARD COUNCILLORS

INGLEWOOD HERITAGE PROTECTION AREA GUIDELINES REVIEW

... by Councillors David Lagan and Bianca Sandri, Inglewood Ward

When seeking community feedback on a possible review of the HPA policy specifically as related to Inglewood the intent was to tackle two issues. The response to those within the Inglewood community who had approached us and asked why planning policy within the Inglewood HPA was so difficult to work with.

Meeting the desires of those wanting to buy and live in Inglewood who wanted to protect the heritage homes but also wanted the ability to build or extend on the family home using a form and materials more in keeping with the family unit that now reside in the area.

Not being able to build a family home which matches an individual's love of the old and new structurally diverse form was keeping some from buying in Inglewood. At the moment we are seeking feedback and from that feedback we will look to revisit the HPA policy as it pertains to Inglewood and, if needed, make some changes to the policy.

UPDATE FROM INGLEWOOD WARD COUNCILLORS CONT.

Original homes are to be retained as are the beautiful streetscapes and wonderful original windows and entrance. Some design excellence in additions and ROW new build is being sought and in that we look for eclectic and area suitable outcomes.

The City of Stirling 'Your Say' page has enabled strong feedback with over 300 responses to date. We will keep you posted as to what the community has told us on the things they want to or might be happy to modify and those things the community within Inglewood definitely want to stay the same.

If you wish to make further comment please contact your Councillors:

david.lagan@stirling.wa.gov.au

bianca.sandri@stirling.wa.gov.au



Mount Lawley Society has some questions ...

The Mount Lawley Society has participated in the Heritage Protection Area Study, which closed on 9 November 2020.

Whilst the Society supports the ability to create new residential developments and assist the community to achieve their objectives, buildings and development need to continue to be sympathetic to our local area's beautiful streetscapes.

Key points raised by the Society in our submission:

- development in the rear of homes should be unobtrusive to the street, there should be minimal change to existing streetscapes
- new developments from laneways and on corner lots should have a roof pitch in keeping with the existing streetscapes and housing in the local area
- significant trees that are older than 50 years should be retained where possible
- fencing from the front streetscape should be in keeping with the materials in the existing streets.

WE ARE LOOKING FOR A NEW HOME

Community group interested in heritage and character of Mount Lawley
and the surrounding suburbs



**MOUNT LAWLEY
SOCIETY IS
LOOKING FOR A
NEW HOME**

**DO YOU KNOW
SOMEONE WITH A
WORKSPACE
THAT MAY SUIT?**

SEEKING A HOME FOR OUR ARCHIVES AND MEETINGS

The Mount Lawley Society is looking for a new home. We have been accessing a temporary space in Yokine for the archiving team, who diligently attend to all our database management, research and archiving.

With a focus on character and heritage, we are appealing to local businesses that know of a traditional property, ideally with a street front that would suit a dedicated group of volunteers.

If you work in the property industry or know someone who has some space in our neighbourhood at an affordable rent, please let a committee member know.

email - mountlawleysociety@gmail.com

THE LOCAL COMMUNITY CAN MAKE A DIFFERENCE

WHAT ABOUT ...

A POCKET PARK IN MONMOUTH STREET

There is a small piece of greenery at No 10 Monmouth Street which the City of Vincent has opened up to the community for discussion. The City is thinking of selling this block of land – which up until very recently was designated ‘recreational’ but now, on the Council website, it has been changed to ‘vacant’.

Right now, it doesn’t look like much, but why sell it?

We suggest that they turn it into a delightful pocket park.

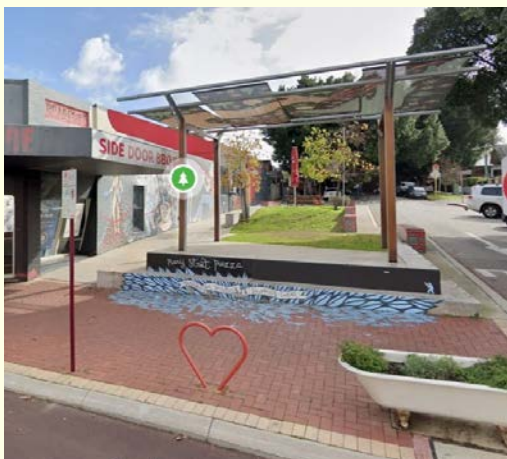
The City of Vincent has been at the forefront of providing the community with much needed small fun, green and relaxing spaces, encouraging residents to be a part of that community. Examples are the Mary Street Piazza, Hyde Street Park in Forrest Street Mt Lawley and the Oxford Street Reserve in Leederville.

By turning this land into a pocket park, the City would be helping meet its criteria of increasing tree canopy; enhancing habitat and promoting biodiversity and greening and enhancing public open spaces.

If you live in the City of Vincent, please have your say. Comments close Friday 27 November 2020.
<https://imagine.vincent.wa.gov.au/10-monmouth>



Hyde Street Park in Forrest Street Mt Lawley



Mary Street Piazza Mt Lawley



Oxford Street Reserve Leederville

HISTORICAL FEATURE

ANECDOTES OF A LOCAL FAMILY

by Roger Elmitt



Above: 38 Walcott Street 2019

THE BOWRA FAMILY

*... who lived at
38 Walcott Street
from 1925 'til 1968.*

There is a lot more to the Bowra Family story than we have room for in this newsletter. Please go to our website to read more about these and other members of the family. Visit <http://www.mountlawleysociety.org.au/archive-stories>

The Bowra family lived at 38 Walcott street from 1925 until 1968. The family consisted of Mrs Minnie Bowra (nee Salter) and her two children, Douglas and Geoffrey – their father Frederick died at Gallipolli in 1915.

Frederick Bowra

Frederick Douglas Atlee Bowra was born on 9 October 1887 in Perth. When he enlisted on 21 June 1915 his occupation was stated as railway engineer and was living at Devon Road, Guildford (Bassendean today) with wife, Minnie.

Frederick Douglas's grandfather was John William Atlee Bowra, a watchmaker and horologist to the Government. His main claim to fame was that he installed the London-built Perth Town Hall clock and maintained it from 1858 to 1898. John's brother (Frederick's great uncle) later partnered with O'Dea to form the well-known Perth undertakers, Bowra and O'Dea.

Frederick married Minnie Salter in St Mary's Kelmscott on 1 November 1911. It is reasonable to assume that they met through St Mary's as he was a member of the vestry and choirmaster. They had two sons, Douglas Samuel (1912–2011) and Geoffrey Frederick (1914–1993).

He was the first soldier enlisted as a sapper in the Field Engineers in Western Australia when he joined the No 4 Field Company on 10 April 1911 and was given Regimental Number 1. He was promoted to Sergeant in September 1911 after topping the statewide exams and, in 1912, was the first Sergeant Major. He was a Lieutenant in the 4th Field Company of Australian Engineers and died of gas poisoning after an explosion in a mine tunnel that the sappers were digging in Shrapnel Valley, Gallipoli on 29 October 1915 aged 28. He is buried at Shrapnel Valley Cemetery together with 600+ others. There is a plaque for him in Kings Park.

His widow, Minnie, received a pension of £91 per annum and their two sons £13 per annum each, later increased to £26 each.

Minnie Bowra nee Salter

Born in Jarrahdale on 11 February 1888, she was the only surviving child of Samuel August Salter (1849-1930) and his second wife Ellen Elizabeth Gilmore (nee Best) (1860-1949).

In 1894 Ellen deserted Samuel and their child, Minnie. When she delivered an illegitimate child, Robert Salter (1899-1918), it finally gave Samuel grounds for divorce. Samuel then brought up Clara (1876-1953), the daughter from his first marriage, and Minnie in Kelmscott. Samuel married his third wife, Mary Ann Louise (nee Collier), (1866-1941) in 1901 and they had a son, Talbot, born in 1903.



Plaque for Frederick Bowra in Kings Park



Above: Frederick and Minnie on their wedding day 1911

Samuel's first wife was Ellen (nee Buckingham) who passed away in 1878 from 'ovarian disease'. Samuel was a timber contractor and hauler/sawyer, as was his father - also Samuel.

It is this Samuel, Minnie's grandfather, after whom Salter Point on the Canning River, was named. The Salter family stationed themselves on the banks of the Canning and engaged in a wood-cutting contract. After being in Pinjarra, Samuel purchased some blocks of land bordering the Canning River and thus settled in Riverside Road, Kelmscott in 1891 which is where Minnie and her father were born.

Minnie's mother's family was from Toodyay where Ellen Elizabeth Gilmore (nee Best) was born on their farm at 'Toopin'. She was the eldest of eleven children and named after her mother Ellen Prince (1842-1918). Ellen died in Mt Lawley on 28 March 1949. She was 88.

Between about 1917 and 1926 Minnie and her two sons, together with stepsister Clara, lived at 56 Farnley Street. Presumably, Clara assisted with the young boys, then around 10 years old.

The 1924 Wise Directories indicates that there were no houses at 38 or 40 Walcott Street but in 1925 Frederick James Bowra (Minnie's father-in-law) built a co-joined house which was numbered 40 and 42 Walcott Street.

Mr Bowra occupied No 42 and Minnie was in No 40 with her two boys, then aged 11 and 13.

In the early 1930s Clara is registered as living at 40 Walcott Street and occupation as cleaner – for Minnie’s father-in-law, Frederick James Bowra. Sadly, around the mid-1930s Clara was institutionalised at Graylands Hospital where she died on 4 August 1953.

By 1933 Wise Directories mentions that Mrs Minnie Bowra lived in No 38. Thus, it is assumed that she had a house built on the empty block. By this time, Minnie had returned to teaching to support her two sons and it is reported that she taught at Guildford Grammar Preparatory School.

As we have seen, Minnie lived at No 38 initially and in her later years. However, it is reported that she lived in Kelmscott during World War II and rented out No 38. It is unclear as to when but Minnie definitely had her house partitioned where she lived on the downside, or right hand side, and it was variously tenanted, occupied by her sons and their families or tenanted on the upside.

The West Australian of 4 October 1934 reported a party for Mrs Minnie Bowra who has “recently returned from a trip to Europe”. In late 1937 Minnie had her home (No 38) on the market. This appears to have been unsuccessful as in early 1938 it was reported that, “McLean, Carmichael Limited have been instructed by the Owner, who is contemplating leaving for an extended trip to



Minnie and her brother, Talbot, about 1956

the Continent to SELL by PUBLIC AUCTION” etc. It was subsequently withdrawn from sale.

The West Australian of 2 August 1938 had an advertisement for the sale of furniture and effects on premises (38 Walcott Street). At some time before, during or after the war (details vary), Minnie divided No 38 into two sections. She lived in the right-hand side with her own front door off the verandah (where the French doors are today), kitchen and living area. The other side was variously lived in by her sons, Douglas and Geoffrey, and their wives and children.

The West Australian of 23 March 1950 informs us that Minnie Bowra “herewith withdraw my Property from all agents, same having been sold privately”. Yet, intriguingly, she still lived there until her passing in 1960!

Below are some recollections from Minnie’s niece:

When we were in our very young years (mid 1940s) we just loved to have a holiday with ‘Aunty Minnie’ at 38 Walcott Street. She’d take us to the shops in Beaufort Street, Mt Lawley and of course this was so different to our part of the world (Kelmscott). Minnie always took us to the picture shows in the city and catching the tram to and from Mt Lawley was so exciting to us. She’d send us home to River Road, Kelmscott on the Roleystone bus and always referred to us as ‘her nieces from the country’.

Among the many treasures that we loved of Minnie’s was her pianola. We children just loved to pump the pedals as the perforated roll turned round and round emitting olden day tunes and it seemed as if we were playing the music on our own. Out the front of her home there was a sloping front lawn and we used to roll from the top part of the lawn down to the bottom and usually right over a small pine growing in the centre. After we stopped being boisterous children the tree grew to a large size.

Snippets from our Archives

Harold St ~ Highgate and Mt Lawley Postcode Borders



We had an interesting email sent to us recently asking, *“why the postal boundary between Highgate and Mount Lawley running along Harold Street is so jagged. It looks like a mouth with missing teeth!”*

I have searched for information and while there is broader info about the local government area boundaries and how they were drawn, I can't seem to find information about why some homes on Harold Street have a Highgate postal address, and some are classed as Mount Lawley.”

We haven't received a definitive answer from 'the powers that be' but it is not uncommon in the older suburbs and could be because of houses being present on side roads – that is corner houses facing away from Harold Street. Another suggestion has been that it is something historically to do with the postie's round!

If any of our members know the answer please let us know.

The Milk Bar at the Astor Theatre

Does anyone remember or remember hearing about the milk bar or tea rooms at the Astor Theatre?

We had a query recently from a woman who was trying to see if we had any information on tea rooms which were inside the Astor Theatre in Mt Lawley.

After much research we couldn't find any photographic evidence but we have found out that it was called the Bluebird Tea Rooms which was next door to the Astor (possibly where the barber shop is now) and that there was internal access from the tea rooms into the cinema. There was also a doorway which led to the empty lot (originally an outdoor cinema).

If anyone knows any more, we'd love to hear from you.



BEAUTIFUL LEADLIGHT WINDOWS

A LEADLIGHT TOUR

by Barrie Baker – Patron MLS

Travelling around Mount Lawley and the older parts of Inglewood by day, but especially at night, the eye cannot but resist noticing doors and surrounds, and often windows of major rooms, showing artistic designs of shapes in brightly coloured glass.

CHARACTER

Artistic appeal

The art of leadlighting is over 1,000 years old, first used in Roman and Byzantine times.

The aim was to permanently beautify the light passing through apertures using shapes of coloured glass supported round these shapes with rods of lead having an 'H' shaped cross section called 'hames'.

To provide strengthening over larger areas, thin rods of steel crossed behind the windows and were attached to hames with twisted wires.



THE HEIGHT OF ART NOUVEVEAU



VICTORIAN & EDWARDIAN ERA



Homes in Mount Lawley were built from 1892, right in the late Victorian and Edwardian period when the 'art nouveau' movement in art and design was at its height.

At its core was the desire to use shapes from nature, particularly leaves and branches, and simple geometrical lines, with symmetrical choice of colours.

Leadlighting was relatively expensive, but was widely used, with larger homes having larger, more complex and more colourful examples. Wealthier residents were willing to have customised designs relating to personal themes.



Victorian & Edwardian Era

Photos - courtesy of Ian Merker

The recipe for producing coloured glass usually involves the addition of a metal to the glass. This is often accomplished by adding some powdered oxide, sulphide, or other compound of that metal to the glass while it is molten.

Barnett Bros in East Perth was one of the most prolific and Arthur Clarke was their head designer. Take a walk and see if you can recognise some of the leadlights in this article.

I conducted two leadlight tours. The first was in 2013 covering streets to the east of Beaufort Street. Our base was the home of Ian Merker at 49 Clotilde Street where we finished with light refreshments.

Barrie Baker, Patron, MLS

MOUNT LAWLEY SOCIETY

LOOKING FOR COMMUNITY HELPERS

Help us make a difference to the retention of our heritage and history of our inner suburbs.

COMMITTEE

President: Tracey King

Vice President: Mark Hodge

Secretary:

Treasurer: Pina Caffarelli

Committee: Christina Gustavson,

Rita Tognini, Debbie Viskovich

Patron and Historian: Barrie Baker

VOLUNTEERS EMAIL US

We encourage everyone to take an active role in our community through our volunteering opportunities and events.



Mount Lawley Society
(@mount_lawley_society) •...
167 Followers, 45 Following, 59...
instagram.com

W: www.mountlawleysociety.org.au
E: mountlawleysociety@gmail.com
F: www.facebook.com/mountlawleysociety

