

# JULY 2021

# FROM THE VERANDAH

Vol 44-2-2021 July

Newsletter for the members of the Mount Lawley Society (MLS) Est. 1977



Above: 'Monomeith' 544 William St (which is still standing). Interestingly, prior to 1916, the section of William Street north of Vincent was known as Clifton Street. The house was built in 1904 for Harold Milner and his family.

Photo taken 30 March 1912 – a birthday party for Dorothy and Jack.

## OVERVIEW:

- New Digs - our new home at Forrest Park Croquet Clubhouse, Harold Street, Mount Lawley
- Quiz Night - 28 August
- Fantastic 2021 Leadlight Tour
- Stories from Archives:
  - Menora's Top House
  - A Revelation in the Attic
- Interesting facts about Croquet
- Fantastic 2021 Leadlight Tour
- Inglewood Design Guidelines Review
- Conservation - Parry Street Heritage Precinct

We aim is to bring you a mix of new and old updates in and around our neighbourhood.

What ever you have going on your verandah, feel free to share. We would love to see your pics of great gardens, architecture, leadlights and anything else you believe represents the character of our local area. Remember to include @mount\_lawley\_society to share.

Dear members

The Leadlight Tour in April just missed a lockdown and I thank our members and friends who attended our event. It was wonderful to see such a great turnout.

In July the Mount Lawley Society moved to our new home at the Forrest Park Croquet Clubhouse, Harold Street Mount Lawley. We have a new space for our Archiving and Committee. Our new neighbours, the Croquet Club have been incredibly welcoming. We look forward to bringing you more social events at our new home, including some croquet lessons very soon.

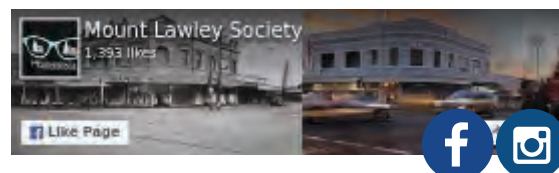
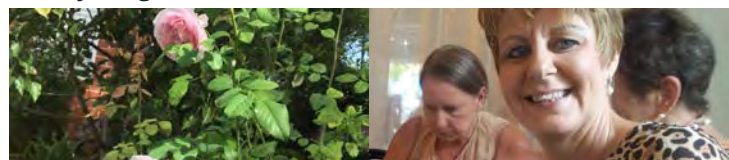
On behalf of the Committee, I invite our members to our biggest annual fundraiser. This event sells out quickly, so get a table together for our Quiz Night which will be on 28 August 2021. More details in our newsletter.

The Society also lodged a submission to the City of Stirling on the updates to the Inglewood Character Retention Guidelines – more on this on the following pages.

From my verandah on Park Road to yours.

Enjoy.

Tracey King, President



W: [www.mountlawleysociety.org.au](http://www.mountlawleysociety.org.au)  
E: [mountlawleysociety@gmail.com](mailto:mountlawleysociety@gmail.com)  
F: [www.facebook.com/mountlawleysociety](https://www.facebook.com/mountlawleysociety)  
I: [https://www.instagram.com/mount\\_lawley\\_society/](https://www.instagram.com/mount_lawley_society/)

# MLS MOVES HOME TO MOUNT LAWLEY

MOUNT LAWLEY SOCIETY MOVES INTO FORREST PARK CROQUET CLUB, HAROLD STREET, MOUNT LAWLEY

## This month our Archiving Team and Committee moved to our new home co-located with the Forrest Park Croquet Club.

The decision to move to Forrest Park is one of excitement, as now we have both a great location for our Archiving Team right here in Harold Street Mount Lawley. We also now have access to a great community space that can be used for our social events.

### Did you know about our volunteers who make up the Archiving Team?

Our quiet and conscientious team of Roger, Roger, Mary and Beth regularly search through our archives, as well as many other databases, for our members and local community.

In the last quarter we completed many research queries. This is a valuable service for our community and one of the many wonderful benefits of being a member.

With our new home in place, you can visit the team at our home, come and view some of our collection, meet with the team and discuss your project. We love helping those who want to learn more about the history of our suburbs.

In partnership with the Croquet Club, we look forward to welcoming you to our Open Day, which is planned for Spring.

MLS President, Tracey King, met with City of Vincent Mayor Emma Cole recently to introduce her to the Mount Lawley Society and our new MLS home.

Emma was very gracious in welcoming us to the Croquet Club venue and is very pleased to see community groups getting together to support each other and their venues. She looks forward to the opening.

Fortuitously, Member for Mt Lawley, Simon Millman MLA, and the Croquet Club's, John Dwyer, was also on site. Mr Millman very kindly offered us the use of the family ute to help shift our archiving equipment and furniture to our new home.

Thanks Simon !

Above left L-R: John Dwyer, Mayor Emma Cole, Simon Millman MLA and Tracey King

Left: Committee member, Christina, unpacking at our new home





# MLS QUIZ NIGHT



## LET'S TRAVEL *THE WORLD*

...HOPEFULLY SOON,  
BUT IN THE MEANTIME  
THAT'S THE THEME OF  
OUR EVENT SO  
COME DRESSED AS  
YOUR FAVOURITE  
CULTURE

**MOUNT LAWLEY BOWLING CLUB**

**CNR ROOKWOOD AND STORTHERS ST MT LAWLEY**

**SATURDAY 28 AUGUST 2021**

**ENTRY 7.00PM**

**FOR A 7.30PM START**

**QUIZ NIGHT TRAVEL PACKAGE**

**PURCHASE INDIVIDUAL TICKETS**

**PURCHASE ONE TABLE - 8 TICKETS**

**\$20 A TICKET**

- BRING A PLATE TO SHARE WITH YOUR TABLE
- BAR FACILITIES AVAILABLE AT BOWLING CLUB PRICES

**BOOKINGS FROM 28 JULY**

**[HTTPS://WWW.TRYBOOKING.COM/BTFFF](https://www.trybooking.com/BTFFF)**

[www.mountlawleysociety.org.au](http://www.mountlawleysociety.org.au)

[mountlawleysociety@gmail.com](mailto:mountlawleysociety@gmail.com)



MOUNT LAWLEY SOCIETY

# ANNUAL MEMBERSHIP

Preserving and promoting the heritage of our suburbs

## - FEE UPDATE - ANNUAL MEMBERSHIP \$20 PER YEAR

- Check up on the history of your home.
- Access information about our suburbs.
- Meet your neighbours at our social events.
- Learn about Mount Lawley, Menora and Inglewood.
- Help keep our heritage suburbs intact.
- Support our archiving volunteers with the resources to preserve and research our history and heritage.

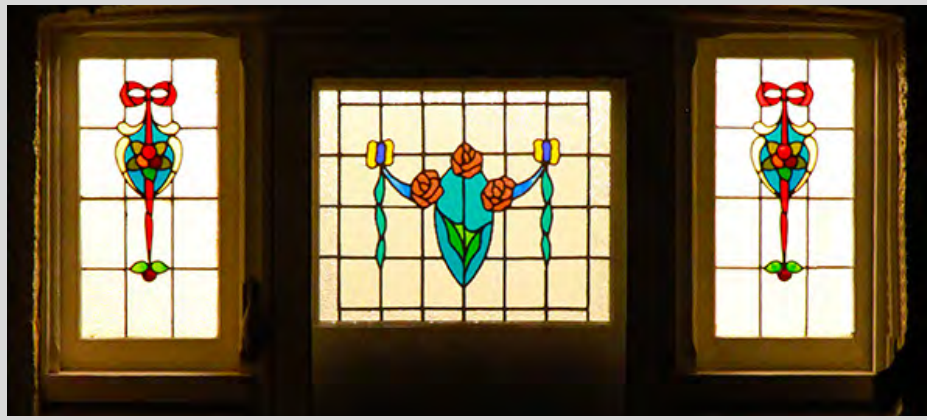
From July 2021, our membership fee will now be charged annually. Those members who are still in the three-year membership cycle will be sent renewal notices when that three year period is finished.

We thank the generosity of our community to help continue the good work of the volunteers of our Archiving team and Committee.



# A COLOURFUL LEADLIGHT TOUR

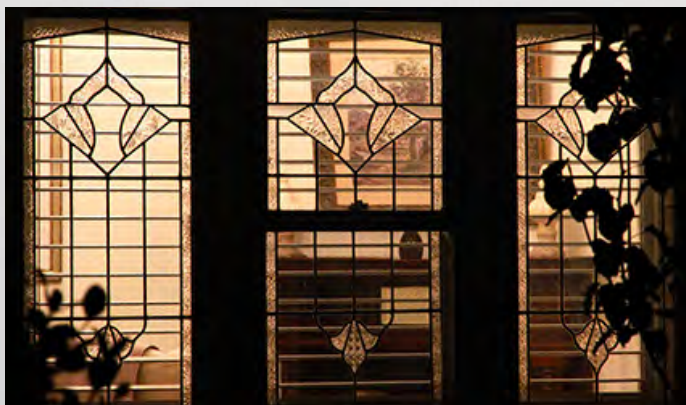
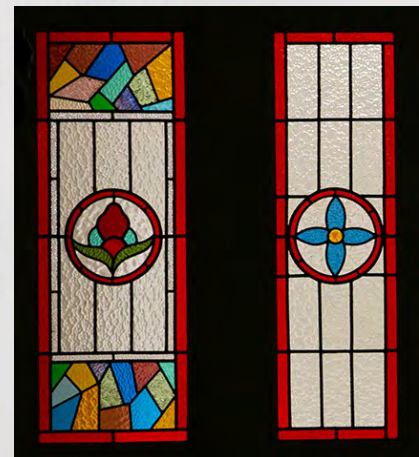
*... with 35 original homes to see, it was fabulous to compare the different lead-lighting styles in this unique pocket of Mount Lawley, Perth WA.*



The Society organised a leadlight tour, the first for a few years. It was exciting to be able to host one in April, this time by way of a stroll around the heritage precinct - we followed a loop from Almondbury Road, Farnley Street, Park Road and Alvan Street. This is the first time we have created an educational tour in the precinct between Beaufort Street and the railway line. The tour was followed by refreshments in one of the suburb's most beautiful gardens on Almondbury Road. Perth is blessed with many beautiful suburbs and this part of Mt Lawley is definitely one of the prettiest.

While the Victorian style of leadlight incorporated geometric designs, birds, flowers and muted backgrounds contrasting with rich, jewel-coloured centres and borders, the subsequent Federation period saw the introduction of textured, multi-coloured glass panes and circular bullseye windows in the leadlight designs. Symbols of the empire - roses, lilies and thistles - were gradually replaced by patriotic images of kookaburras, cockatoos and native flora.

Towards the end of this era, small picture windows became popular, often featuring yachts, windmills and lighthouses. One of the most common styles in Mount Lawley is Art Nouveau which dominated the late Federation and Edwardian eras. This style is renowned for its graceful curving lines and symmetry, with a focus on the lead lines themselves. In contrast to its predecessors, Art Deco leadlights were colourless, semi-opaque and heavily textured with geometric designs, fountain and sunburst motifs.



During the tour, Vice-president, Mark Hodges, regaled guests with intriguing tales of the homes' original owners, such as which house's original owner was incarcerated in Pentridge for larceny; who was charged for filing false tax returns; who was involved in a murder trial and which high ranking official ended up in a messy public divorce in 1929.

Come along to our next lead light tour and hear some intriguing tales firsthand!



# SNIPPETS FROM THE ARCHIVING TEAM

## MENORA'S TOP HOUSE

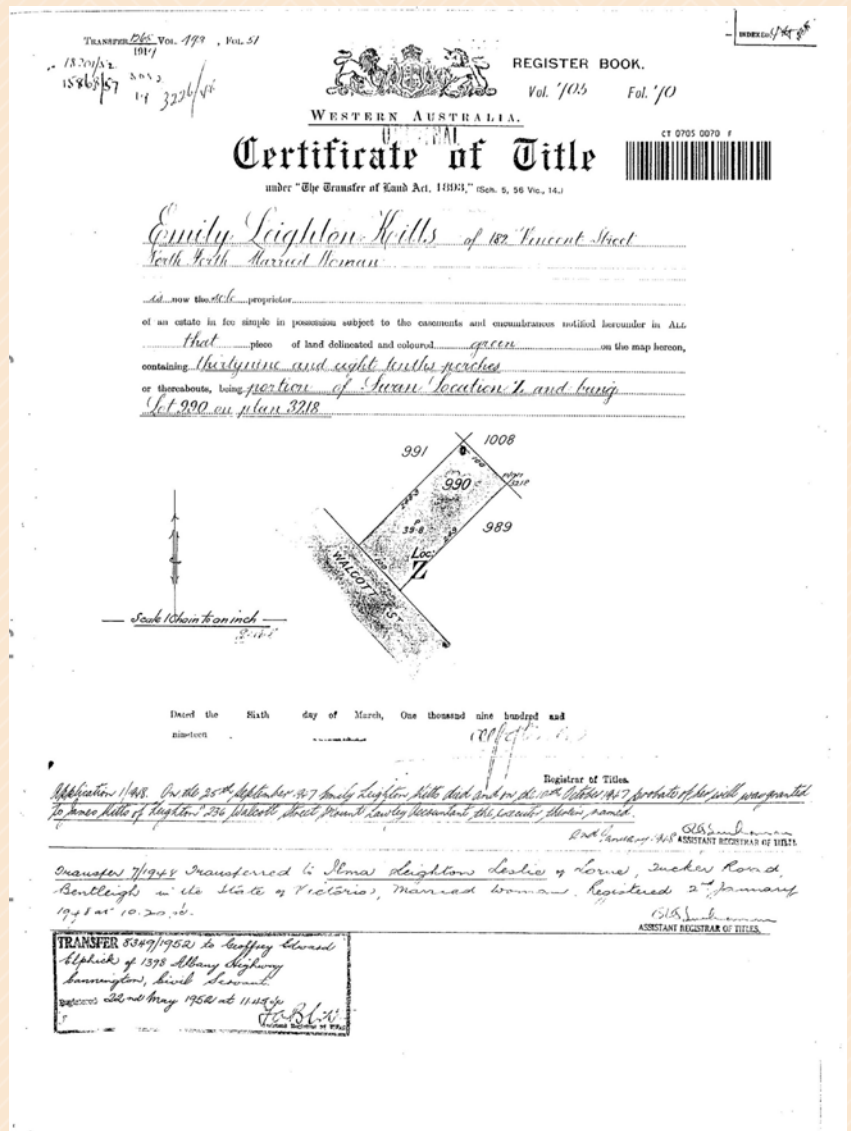
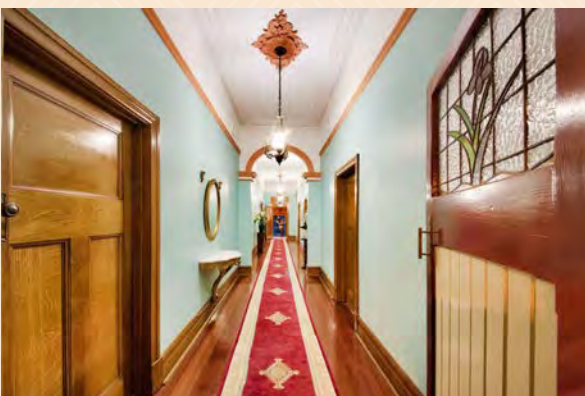
Travelling northwards on Walcott Street, on the crest of the hill leading down to the Alexander Drive traffic lights on the right hand side, sits the recently sold house at No 236.

**From 1920 to April 2021 – just over 100 years – this house has been owned by only two families since being built.**

### Some History

From the original Certificate of Title, we see that Emily Leighton Kitts, of 182 Vincent Street North Perth, first took possession of the land (Lot 990 on Plan 3218) consisting of thirty-nine and eight tenths perches (1006 square metres) on 6 March 1919. According to *Wise Directories* there was not a house on the land until the 1920 edition, which was in the name of Jas Kitts.

The next entry on the Certificate of Title, dated 2 January 1948 states that on 25 September 1947 Emily Leighton Kitts died and that on 10 October 1947 Probate of her Will was granted to James Kitts of 'Leighton' 236 Walcott Street Mount Lawley, Accountant, the executor, therein named.



Above right: Certificate of Title

Top left, middle and below: No 236 for sale in 2021



## MENORA'S TOP HOUSE ...CONTINUED

The last entry, registered on 22 May 1952, is of Geoffrey Edward Elphick of 1398 Albany Highway Cannington, Civil Servant. Geoffrey married Shirley MacKinnon Moore in 1947.

Then in April 2021, the third owners in over 100 years, purchased the property from the Elphick family.

The full story on the families and their lives is an interesting read, with some fabulous family snaps and is available on our website, along with other Archiving stories:

<http://www.mountlawleysociety.org.au/archive-stories>



*Shirley and Geoffrey on their wedding day 1947*



*Above right: The kids at No 236: (back) Richard Grocer (from No 230), Milton Elphick; (front) Sonya and Rex Elphick and twins Malcolm and Peta Bennett (from No 232).*

*Above left: Brett Elphick with Socks in front of a bright shiny Ford Consul.*



## ARCHIVING - A VOYAGE OF DISCOVERY ... ... WITH A REVELATION IN THE ATTIC

**We never know where a research enquiry will lead – and often it is a two-way voyage of discovery, as it was a year or so ago with the new owners of 23 Almondbury Road, Mt Lawley.**

Julie and Shannon were keen to discover as much historical information on their new home as they could, so it was lovely to receive an email from them, asking for anything the MLS might have on their property. As they had just joined our membership ranks, we were more than happy to start a detailed search.

From the dusty attic, Julie had already unearthed a large photo of a young woman (pictured right), taken in the late 1920s/early 1930s, who they hoped might be Olive Anderson (nee Holman), who's name appears on the first deed of the house.





## ... WITH A REVELATION IN THE ATTIC ... CONTINUED

Further research did indeed confirm their hopes. Olive Holman (b1885) was the daughter of Harriet Fowler and William Holman – two of Perth's original colonists. Olive married John Anderson in 1907, and, even though Olive's is the first name on the house deed, it wasn't until 1921 that their names appear in Wise's Directory as living in the house. A Thomas J Milligan lived there from 1911–1921 – possibly a relative of Olive's.

The house was originally named 'Romahapa' – which is a town in New Zealand's South Island.

The Anderson family continued their association with the suburb for many years, with their four daughters marrying in St Patrick's Church Mt Lawley.

There are numerous newspaper articles which describe their weddings, and other family events, in beautiful detail (as was the practice, and probably due to lack of photographs).

Details such as in 1937 for daughter Eileen's wedding, *the bride wore a gown of magnolia satin, cut on princess lines, with the bodice finished with a Medici collar and buttons*"; and another in 1939 for daughter Beryl's wedding, *It was a smart frock of chartreuse continental crepe, with high neckline, short sleeves and a panel of chartreuse spotted with white. A black sisal hat was added pinned with a spray of red roses to her black handbag*".

Prior to these newspaper cuttings, in 1907, part of the lengthy description of their parents' wedding reads, *she wore a small coronet of orange-blossom over a handsomely embroidered veil, and carried a beautiful waterfall bouquet of tuberose, carnations and fern, tied with long chiffon streamers, the bridegroom's gift*".

Following the sale of the house by the Anderson's in 1978, there were many owners.

With the tattered photo of the lovely Olive lying in the attic all those years, perhaps she haunted the house! Who knows?

### Olive's Place in the Home Now

Julie and Shannon have happily restored the old photo and Olive's photo now greets people on arrival. Hopefully she is also happy with her new place and standing in her old home.





# MLS Submission Inglewood Design Review

- Laneway streetscapes may need more flexibility, however architectural character and tree canopy should be retained.
- Include strict visual guidelines for flat-roofed carports.
- No solar panels on front of homes.

## ... from our submission to the City of Stirling

The Mount Lawley Society, on behalf of members, broadly welcomes the design changes; however, there are some items proposed by the City of Stirling that we feel are inconsistent with the community and our members to retain streetscape character. Further, the decisions for change are based on a very small sample of residents. We encourage Council to approach this consistently in the Design Guidelines when considering integration of modern materials, to protect the character of our streets. Specifically, the following streetscape and materials are inconsistent with the design guidelines of Inglewood character homes built before 1960:

**Proposed - new controls for carports - COS will allow flat-roofed carports in Inglewood** - this feedback was from a very small sample of fewer than 30 attendees at the previous workshop. This new addition, in principle, is not supported by MLS, as it is in conflict with the retention of streetscape and heritage in Inglewood character streets. There is a risk that the materials and built form will be that of a colour bond flat patio. The Society would be receptive to the City of Stirling approaching this need by developing visual guidelines with imagery and architectural design recommendations that have been validated and published via the COS Design Review Panel. Using architectural style drawings to define visually and by choice of building materials what is acceptable will ensure the protection of character and value of homes in the area. This would enable the community to have a visual reference when briefing architects and builders for their development.

**Proposed - COS will allow solar panels on the front of houses** - The installation of renewable energy systems must not distort, obscure or detract from the significance of the place. Only 21 people at the consultation voted for panels in the front. This is not a representative community sample. State Heritage Guidelines, which provide a significant reference framework for the Heritage Protection Area, do not promote or encourage solar panels to be visible from the front of buildings. Installation of renewable energy systems can have a significant impact on the fabric and visual setting and may also be detrimental to the place. Main frontages, significant vistas to and from the place, and the form and mass of the place need to be considered to guide the location of the equipment. The visual setting of the place, particularly of its main frontage and the dominant roof, must be maintained. The system must not detract from the visual presentation of the place to its main street or significant vista. Significant coverage of solar panels in the front of properties will create a significant visual impact, and by default brings into play an alternative roofing material due to the expanse per m2 of a family home 19 panel or similar sized solar panel system. It will be detrimental to the character protection of the area. The local planning policy should continue to conserve and protect our local heritage and history: "ensure that new buildings (where permitted), alterations, additions to existing buildings, carports, garages and front fences are in keeping with the heritage character of the area, respect the scale and proportions of surrounding buildings, and are designed to fit into the existing streetscape".

Read the full submission on our website - <https://www.mountlawleysociety.org.au/news>





# HERITAGE PRECINCT CONSERVATION PLAN

## Parry Street Heritage Precinct

**WA Recovery project funds are being used toward critical conservation works on the Federation cottages in Parry Street Perth.**

**Seven heritage cottages on Parry Street in Perth will share in \$1.3 million for priority conservation works under the McGowan Government's WA Recovery Plan.**

The precinct is on the border of Perth CBD and Northbridge and is recognised on the State Register of Heritage Places as a rare example of an uninterrupted streetscape featuring late nineteenth and early to mid-twentieth century dwellings.

The precinct has cultural significance as it reflects the expansion of residential

development on the city fringes generated by the population influx associated with the 1890's gold rush.

The company selected to undertake the construction is firm Western Projects who has been awarded the contract.

Western Projects is a locally owned and operated heritage contractor with experience on conservation projects for the National Trust of WA, University of Western Australia and award-winning conservation of Wanslea House in Cottesloe.

Once the refurbishments are complete, the homes will be added to WA's public housing portfolio and support some of our state's most vulnerable families.





# from our friends at the Forrest Park Croquet Club



<https://forrestpark.com.au/>

The committee and members of Forrest Park Croquet Club welcome the members of the Mount Lawley Society to our club, Harold Street, Mount Lawley.

Forrest Park Croquet Club will be holding its Club Championships over the weekend of 7-8 August. We have some of the best players in the state eligible to compete in this event, so a high standard of play is expected. The final should be played after about 3.00pm on Sunday afternoon, and everyone is welcome to watch.

To novices, croquet has its mysteries. However, it has a long history. Croquet has long had an English association as Joseph Strutt describes the way pall-mall (Latin for ball and mallet) was played in England in 1810:

"Pale-maille is a game wherein a round wooden ball is struck with a mallet through a high arch of iron, which he that can do at the fewest blows, or at the number agreed upon, wins. It is to be observed, that there are two of these arches, that is one at either end of the alley".

The game of mall was a fashionable amusement in the reign of Charles the Second, and the walk in Saint James's Park, now called the Mall, received its name from having been appropriated to the purpose of playing at mall, where Charles and his courtiers frequently exercised in the practice of this pastime. But croquet dates back to 1237. The oldest document bearing the word 'croquet' registering the modern version of the game was lodged in London in 1856, but the game harks back to the 12th century when it looked more like a chaotic form of hockey or football. It is part of the group of games that form 'ground billiards' with its strategic highly competitive elements.

By 1870 croquet had started to be eclipsed by the new game of lawn tennis, although croquet was an Olympic sport at turn of the twentieth century, and now croquet is played worldwide by a group of passionate aficionados.





from our Member for Mount Lawley

# Simon Millman MLA



Dear Members

Often when I am out door-knocking in our community, residents raise their concerns with me over local traffic issues. In particular, people have expressed concern about rat running and speeding on local streets.

Recently we have seen two road safety initiatives in our local area. The first was implemented by the City of Vincent, and the second by the City of Stirling.

The City of Vincent is about to conclude a two-year trial of speed reduction in the residential streets in the area bound by Newcastle, Vincent, Charles streets and the Swan River. In these areas the speed limit was reduced from 50km/h to 40km/h with main distributor roads being unaffected.

A 12 month Road Safety Commission report on the City of Vincent trials found some speed reduction effects. It was found that the reduced speed limits were also likely to have long term crash reduction benefits.

Perhaps most interestingly, the trial saw the number of pedestrians and cyclists in the area increase by 14%.

Finally, residents of the trial area were generally supportive of the limit and most thought it could be useful in other areas.

The second initiative falls within the jurisdiction of the City of Stirling:

Starting on 5 July, the speed limit along Beaufort Street, between Central Avenue and Crawford Road has been lowered from 60km/h to 40km/h. This new speed limit is applicable between the hours of 7:30am and 10.00pm Sunday to Thursday and 7:30am to 1.00am Friday and Saturday.



As the member for Mount Lawley, I strongly believe in the importance of community consultation. With that in mind I urge members to get in touch with me about these two trials as well as other future potential road safety initiatives. Perhaps in the near future there might be an opportunity to trial reduce speeds on local roads in our Heritage Protection Area.

To talk about these or any other Mount Lawley matters, please feel free to contact me.

**Simon Millman MLA**

**Member for Mount Lawley**

# LOOKING FOR COMMUNITY HELPERS

*Help us make a difference to the retention of our heritage and history of our inner suburbs.*

## COMMITTEE

President: Tracey King

Vice President: Mark Hodge

Secretary: Julie Harrison

Treasurer: Pina Caffarelli

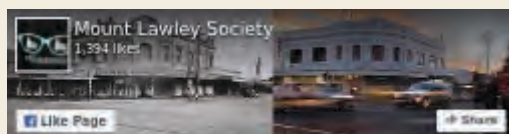
Committee: Christina Gustavson,

Rita Tognini, Fiona Henfrey, Barry Smith

Patron and Historian: Barrie Baker

## VOLUNTEERS EMAIL US

We encourage everyone to take an active role in our community through our volunteering opportunities and events.



W: [www.mountlawleysociety.org.au](http://www.mountlawleysociety.org.au)

E: [mountlawleysociety@gmail.com](mailto:mountlawleysociety@gmail.com)

F: [www.facebook.com/mountlawleysociety](https://www.facebook.com/mountlawleysociety)

Visit us:

Forrest Park Croquet Clubhouse

Harold Street

Mount Lawley WA 6050

